

NRSEF

Community Outreach Session #4

Conclusions, Discussions and
Presentation Boards

Google Science Fair

- Recently announced was the first annual Google Science Fair
- 13-18 year olds may enter
- Submission deadline is April 4th
- For more information go to:
www.google.com/sciencefair
- I also recommend to go to
www.youthscience.ca

How to Stay Relevant?

- Start connecting with current research by finding journals, magazines and quality on-line resources
- www.ted.com
- www.cbc.ca/quirks

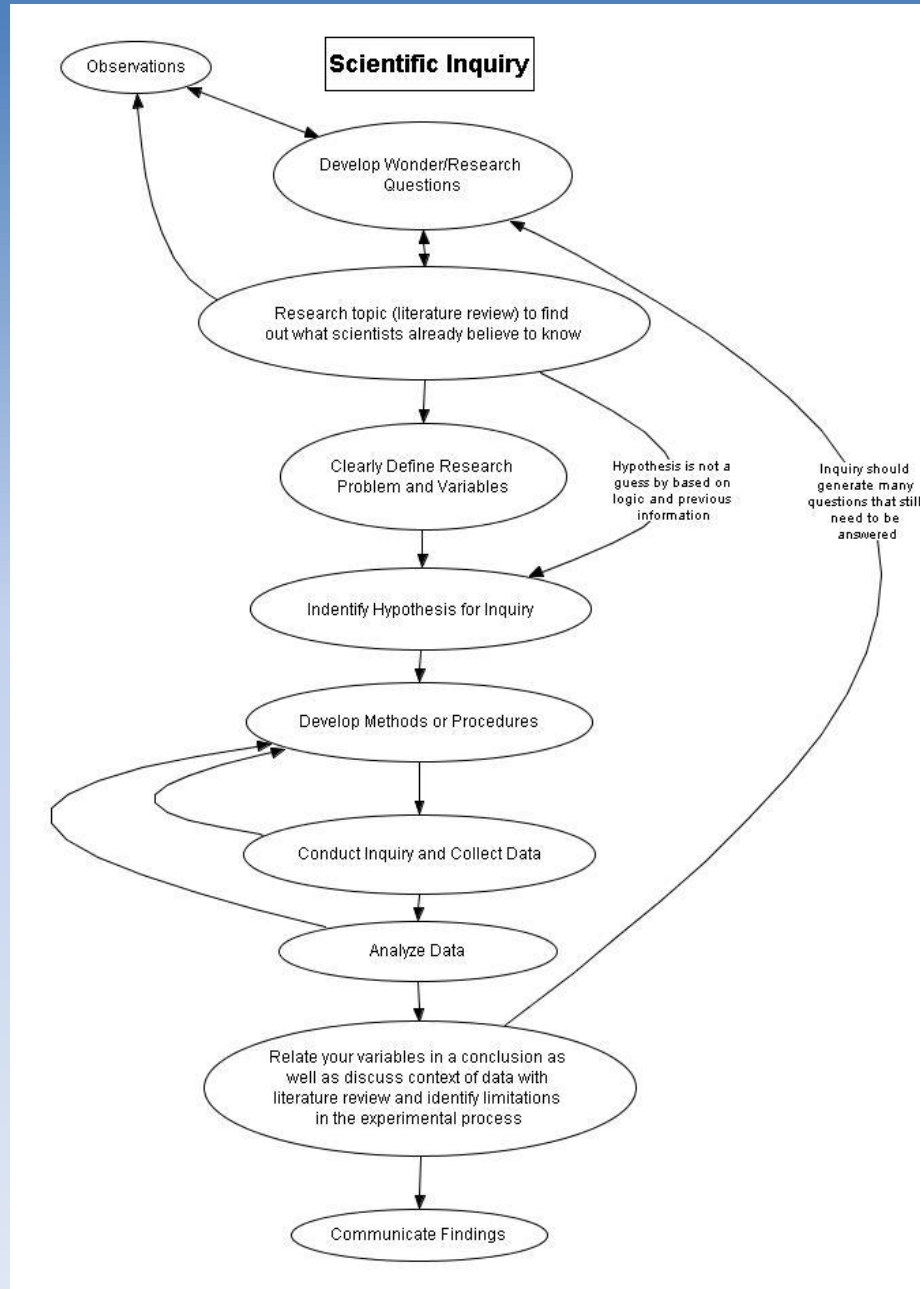
NRSEF

- Make sure to check the site for important information
- Make sure to complete necessary forms before the fair (e.g., human subject forms)
- Be prepared to register for our fair
- www.niagarasciencefair.org

Where are you at?

- What have been the challenges for your projects?
- What have been your successes?
- What are your current burning questions about completing a project?

Back to the Framework



Conclusions/Results

- Succinctly report your findings.
- The first thing is to clearly identify the relationship between your variables
- Secondly, support your relationship with data from your experiment. Data must be used to make a strong case.
- Finally, address your hypothesis
- In a design project, evaluate your prototype based on your criteria that you previously set.

What should be the Conclusion?

- For the following data – suggest the conclusion that should be presented
- How certain are you of your conclusion?

Discussions - Experiments

- The last section of your project should try to explain the relationship presented in your conclusion.
- Use previous research to put your work in context. Do NOT plagiarize, instead cite work and complete a bibliography.
- Be clear about practical application of your results
- Explain limitations and errors in your work
- Suggest further areas of study on your topic. Where do you go from here?

Discussions – Design

- Explain the successes and challenges of your prototype development
- Suggest the importance of your device in a practical context. How easy would it be to make on a large scale? What would be an estimate of cost?
- Where can you go with the prototype? What elements still need to be refined or what other changes could be made to modify your prototype? Are there other designs that would compliment your work?

The End